


Install and authorize ArcGIS for Desktop 10.5.x for Concurrent Use licenses

Step 1) On the user's computer: install ArcGIS for Desktop

To be able to install ArcGIS for Desktop, you have to be logged in as administrator or be authorized to manage the system.

Go to <http://my.esri.com> to download the software. Once the download has completed, browse to the folder where you saved the installation file. Right-click the executable and choose 'Run as administrator'.

Accept the default installation instructions.


 *For Concurrent Use licenses, you have to install two products: ArcGIS for Desktop (on the user's computer) and the ArcGIS License Manager (on the license server).*

Step 2) On the license server: install and authorize the License Server Administrator

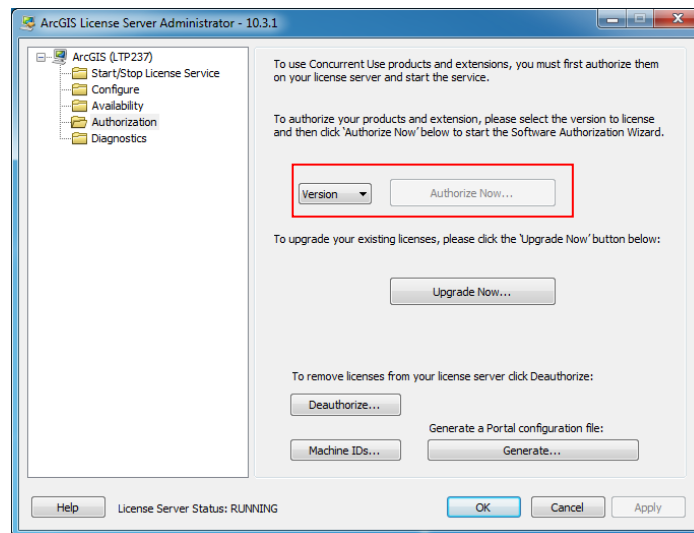
Go to <http://my.esri.com> to download the software. Once the download has completed, browse to the folder where you saved the installation file. Right-click the executable and choose 'Run as administrator'.

Accept the default installation instructions.

At the end of the installation of the License Manager on the license server, you will be asked to continue the authorization of the software with the Software Authorization Wizard. Click 'Yes'.

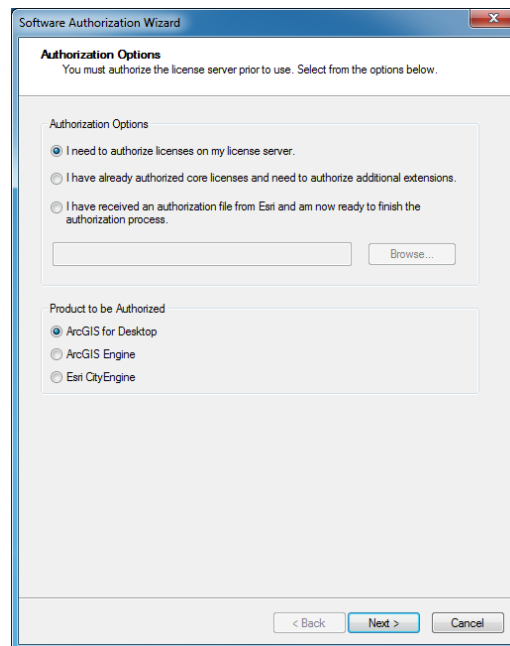
 *It's possible to continue the activation later on, by opening the ArcGIS License Server Administrator (Start > All programs > ArcGIS > License Manager > License Server Administrator).*

In the ArcGIS License Server Administrator, click 'Authorization' in the frame on the left, choose 10.1-10.5 in the version dropdown list and click 'Authorize Now...'.



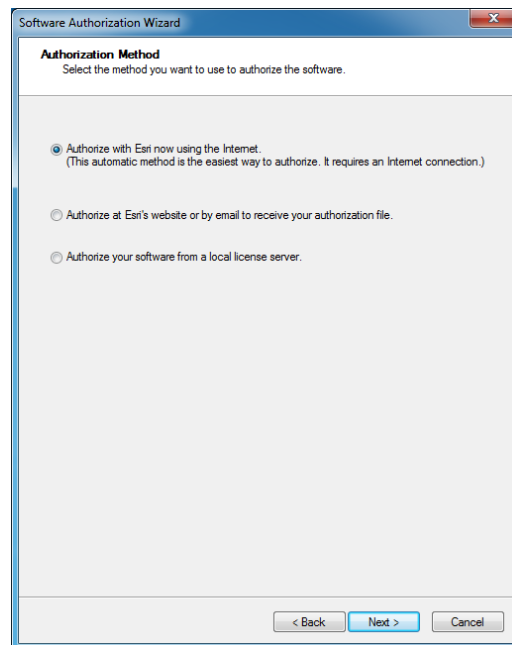
The Software Authorization Wizard opens. Choose the first option (I need to authorize licenses on my license server) in case you want to authorize your ArcGIS for Desktop core license(s). If your core product is already authorized and you need to authorize additional licenses, choose the second option.

Once you select the product to be authorized (ArcGIS for Desktop), the 'Next' button becomes active.




There are two ways to authorize the license, depending on whether this PC, the one with the license server administrator, has a connection to the internet or not:

- If the computer with the license manager is connected to the internet, please choose the first option. This is the quickest and easiest way to authorize.
- If there is no connection available, choose the second option.



Option 1: you choose the online authorization

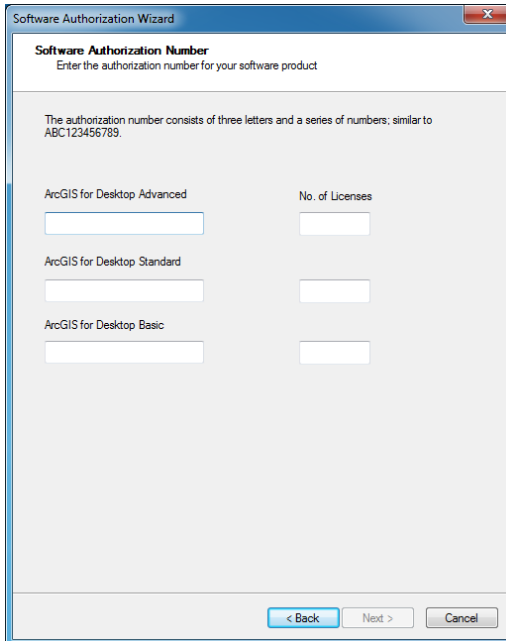
The online authorization is the easiest way to authorize, and thus the standard method. Enter your personal information in the next screens.

 *If you use any accents or other special characters, the authorization procedure could be blocked during the last phase without sending a documented error message.*

After providing your personal information, the system will ask you to enter the authorization code (EFL123456789) and the amount of licenses for each level.

As you proceed with the authorization, you will notice that you can enter authorization codes for extensions. Each ArcGIS for Desktop extension has its own authorization code. It's also possible to request free demo versions for extensions that you didn't authorize.

The information you provided during this authorization process will be send to esri, and your software will be authorized on the license server.

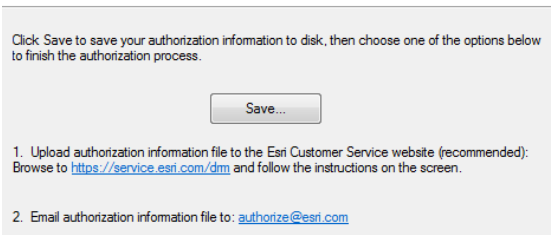


Option 2: you choose the offline authorization

The procedure is not yet finished if you chose for the offline authorization.

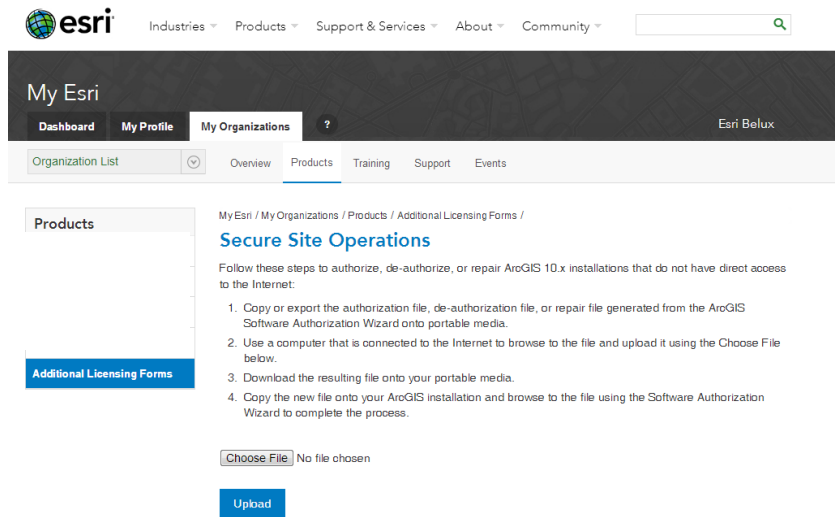
Click 'Save' to register the authorization information in an 'authorize.txt' file. Copy this file to a computer that has access to the internet, using a portable device to transfer files (USB).

Email Authorization



Next, you choose one of the two following methods (the first one is recommended):

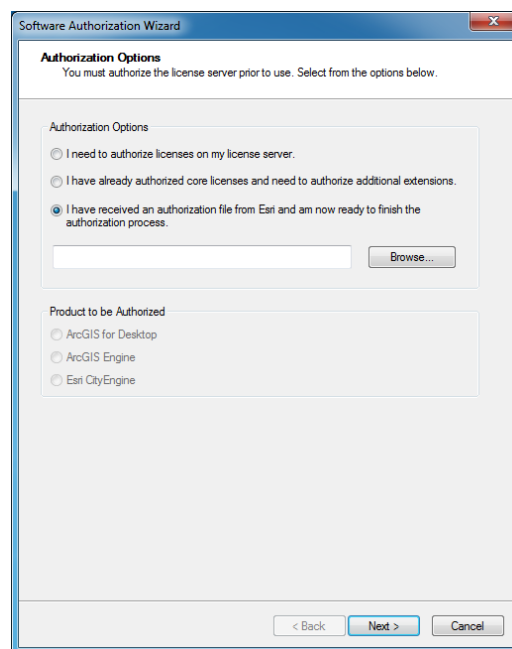
1. Upload the information file (authorize.txt) to <https://my.esri.com/#/activations/secure-site>. Click 'upload' and save the resulting 'Authorization.resps' file.



2. Send the information file (authorize.txt) to the following e-mail address: authorize@esri.com. Esri will send you a response file: 'Authorization.resps'.

In both cases, save the 'Authorization.resps' file and copy it to the license server. Return to the License Server Administrator, click 'Authorization' in the frame on the left and click 'Authorize now...'

Choose the third option and browse to the folder where you earlier stored the Authorization file. Click 'Open', then 'Next'.



The process is finished and a message will appear to confirm the activation of your license on the license server.

Step 3) On the user's computer: define the License Manager

The ArcGIS for Desktop users will not be able to use their software as long as they haven't defined the License Manager on their computer.

Open the ArcGIS Administrator (*Start > All programs > ArcGIS > ArcGIS Administrator*), click 'Desktop' in the frame on the left and choose the available license level you wish to use. Then click 'Change...'. Enter the license server's hostname and click 'Apply' and 'OK'.

