

Install and Authorize ArcGIS for Desktop 10.5.x for Single Use Licenses

Installation

To be able to install ArcGIS Desktop, you have to be logged in as administrator or be authorized to manage the system.

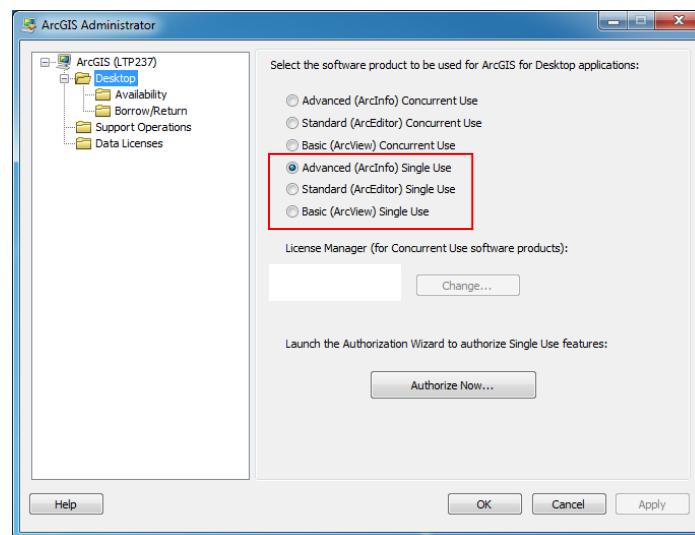
Go to <http://my.esri.com> to download the software. Once the download has completed, browse to the folder where you saved the installation file. Right-click the executable and choose 'Run as administrator'.

Accept the default installation instructions. At the end of the installation, you will be asked to continue the authorization of the software using the Software Authorization Wizard. Click 'Yes' and follow the below steps.

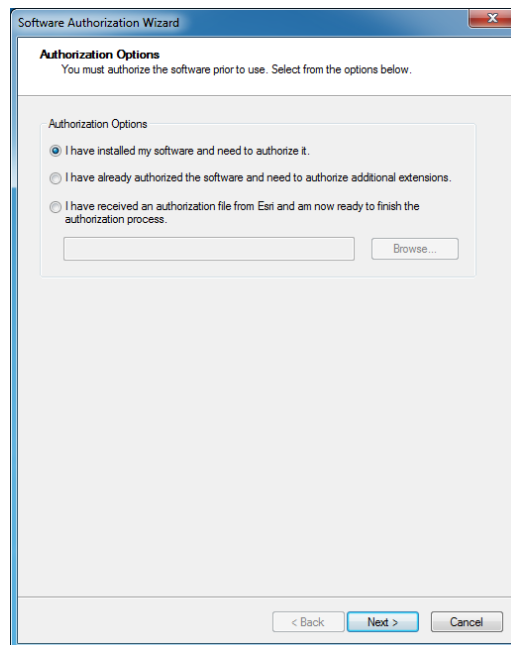
Authorization

 *It is possible to complete this authorization later on, by opening the ArcGIS Administrator (Start > All programs > ArcGIS > ArcGIS Administrator) and by following the steps below.*

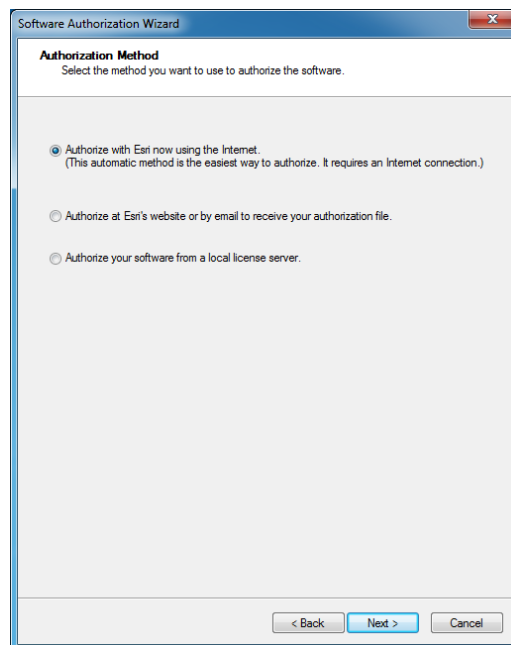
Choose the product according to your license (Advanced, Standard or Basic) and click 'Authorize Now...'



The Software Authorization Wizard opens. Choose the first option (I have installed my software and need to authorize it) in case you want to authorize your ArcGIS Desktop core license. If your core product is already authorized and you only need to authorize additional licenses, choose the second option. Click 'Next'.




The authorization of the software requires a connection to the internet. If your computer is connected to the internet, please choose the first option in the below image. This is the quickest and easiest way to authorize. If there is no connection available, choose the second option.



Option 1: you chose the online authorization

The online authorization is the easiest way to authorize the software, and thus the standard method. Enter your personal information in the next screens.

 *If you use accents or other special characters, the authorization procedure could be blocked during the last phase without sending a documented error message.*

After providing your personal information, the system will ask you to enter your authorization code (ex: ESU123456789).

As you proceed with the authorization, you will notice that you can enter authorization codes for extensions. Each ArcGIS for Desktop extension has its own authorization code. It's also possible to request free demo versions for extensions that you didn't authorize.

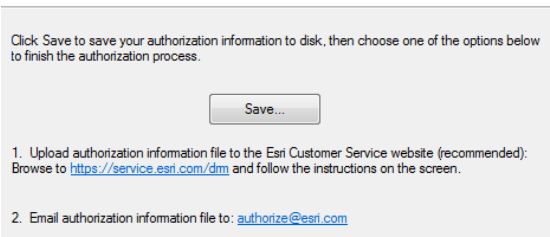
The information you provided during this authorization process will be send to esri, and your software will be authorized. The ArcGIS Desktop software is now ready to use.

Option 2: you chose the offline authorization

The procedure is not yet finished if you chose for the offline authorization.

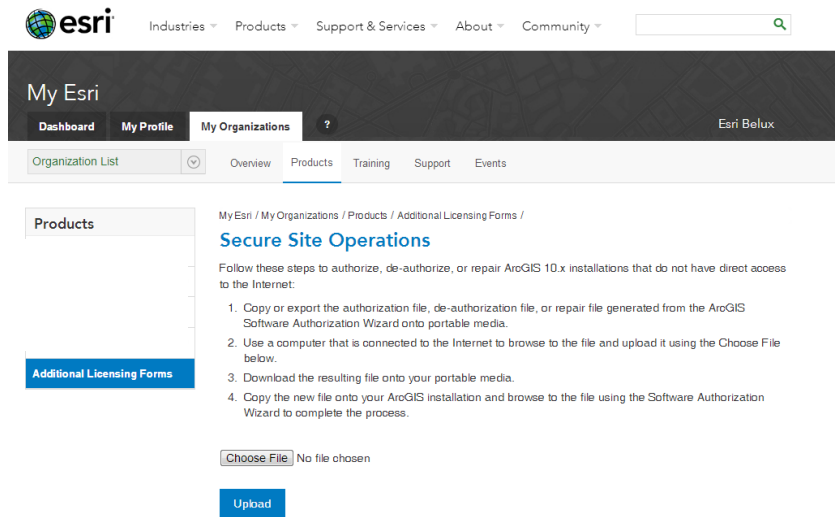
Click 'Save' to register the authorization information in an 'authorize.txt' file. Copy this file to a computer that has access to the internet, using a portable device to transfer files (USB).

Email Authorization



Next, you choose one of the two following methods (the first one is recommended):

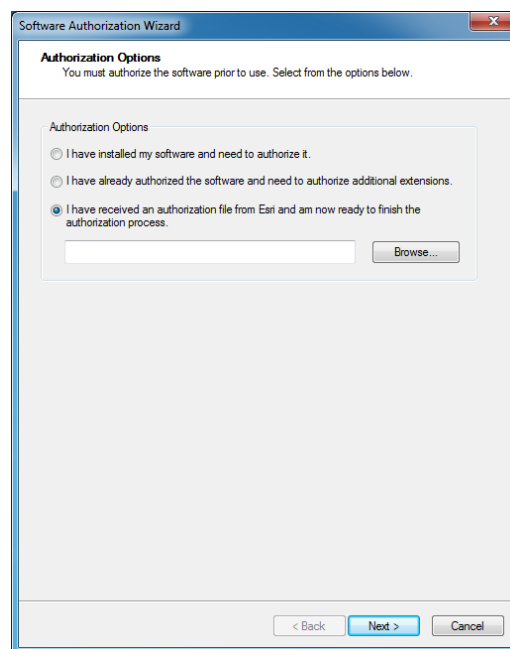
1. Upload the information file (authorize.txt) to <https://my.esri.com/#/activations/secure-site>. Click 'upload' and save the resulting 'Authorization.respc' file.



2. Send the information file (authorize.txt) to the following e-mail address: authorize@esri.com. Esri will send you a response file: 'Authorization.respc'.

In both cases, save the 'Authorization.respc' file and copy it to your computer. Return to the ArcGIS Administrator, click 'Desktop' in the frame on the left and click 'Authorize now...'

Choose the third option and browse to the folder where you earlier stored the Authorization file. Click 'Open', then 'Next'.



The process is finished and a message will appear to confirm the activation of your license.