

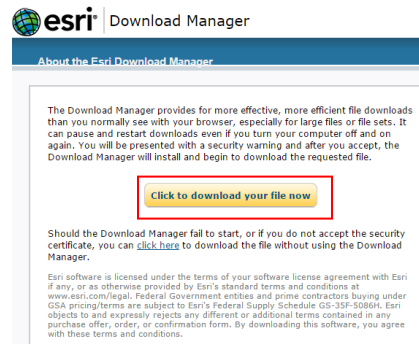
## Download the software

To download the software, please go to the following website: <http://my.esri.com>. Log in with your esri Account, click 'My organizations' and activate the 'Downloads' tab. You will see a list with all the available esri software for your organization.

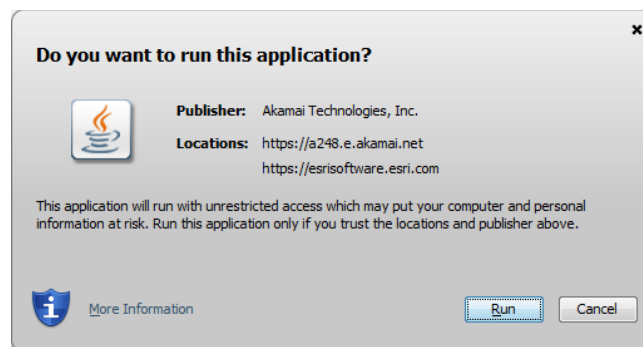
Choose the product that you would like to download and click 'View downloads'. The result is a list of separate software components. Now you can start downloading the product of your choice.

	Products ▾	Version ▾	
ArcGIS Pro		2.0 ▾	<a href="#">View Downloads</a>
ArcGIS Desktop Prerelease		10.6	<a href="#">View Downloads</a>
ArcGIS Desktop		10.5.1 ▾	<a href="#">View Downloads</a>
ArcGIS for Desktop		10.4.1 ▾	<a href="#">View Downloads</a>
ArcGIS Enterprise (Windows) Prerelease		10.6	<a href="#">View Downloads</a>
ArcGIS Enterprise (Windows)		10.5.1 ▾	<a href="#">View Downloads</a>
ArcGIS for Server Enterprise (Windows)		10.4.1 ▾	<a href="#">View Downloads</a>
ArcGIS Enterprise (Linux) Prerelease		10.6	<a href="#">View Downloads</a>
ArcGIS Enterprise (Linux)		10.5.1 ▾	<a href="#">View Downloads</a>
ArcGIS for Server Enterprise (Linux)		10.4.1 ▾	<a href="#">View Downloads</a>

Once you click 'Download', the esri Download Manager will open. Click the button 'Click to download your file now'.



The following screen will appear.



Click 'Run' and choose a location where to save your installation file (.exe file).